

ALLSHENG

GeneCE-100

Bio-Fragment Analyzing System



GeneCE-100

Bio-Fragment Analyzing System

GeneCE-100 offers nucleic acid quality control for a range of applications, including DNA QC, NGS libraries, cell-free DNA (cfDNA), PCR fragments and RNA QC.

It provides consistent high-precision analysis by using the same single-channel cartridge. And it provides flexible sample capacity from 1 to 96 samples.



Features

01 Easy to Use

Equipped with a 10-inch rotatable touch screen. It can switch between horizontal and vertical screens according to analysis needs.

02 High Sensitivity

Reliable detection with sensitivity down to 1 pg/ μ L.

03 High Resolution

Resolution down to 1~4 bp for fragment <500 bp (2 bp for fragment <200 bp).

04 Reliable Standard

Provide concentration, size, 28 S / 18 S, DNA integrity indicator (DII), RNA integrity indicator (RII), DV200, etc.

05 Gel Cartridges

Designed for analyzing at least 200 samples.

06 Parallel Analysis

Flexible sample capacity from 1 to 96 samples.

07 Intelligent Counting

The RFID chip embedded in the cartridge can automatically record the number of tests and expiration dates, and provide prompts.

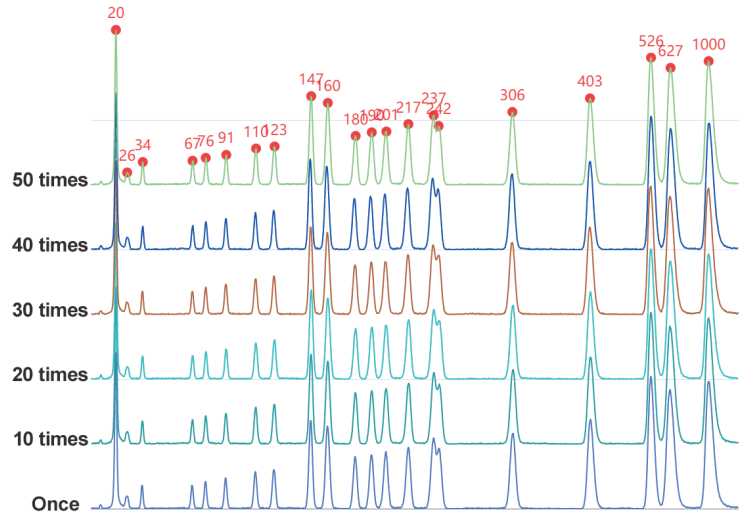
08 Multiple Specification

NH1 high-sensitivity, SH1 high-resolution DNA analysis cartridge kits and SC2 standard cartridge kits.

01

High Repeatability

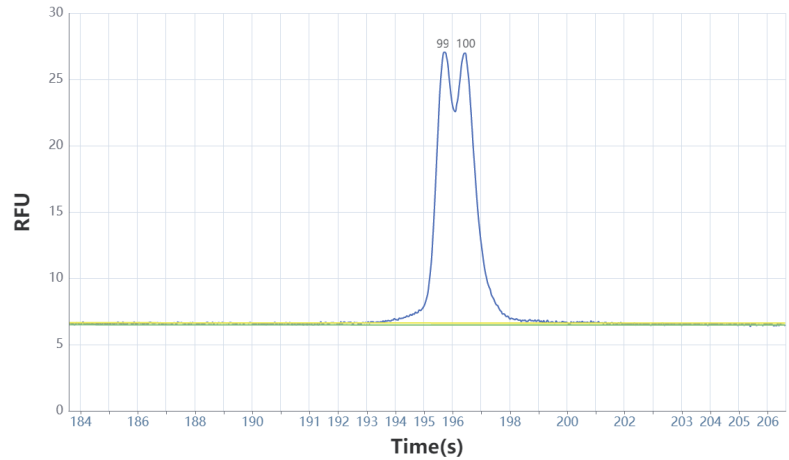
Repeat the test 50 times for Marker samples and the Marker strips can still maintain excellent fragment accuracy.



02

High Resolution

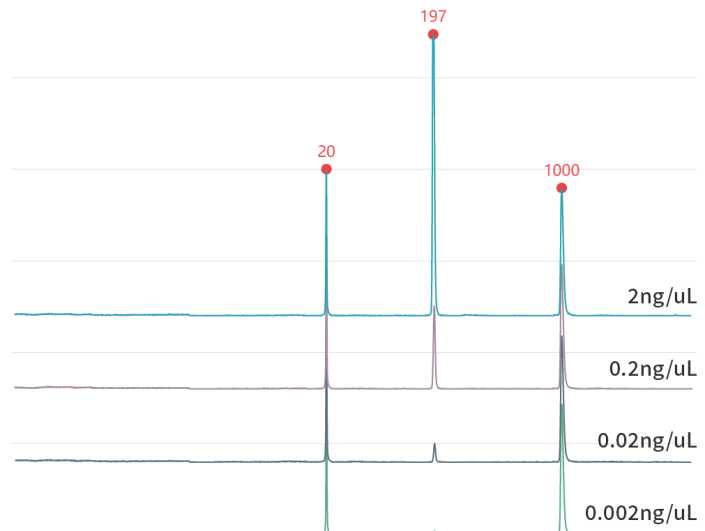
Can resolve DNA samples with differences as low as 1 bp.



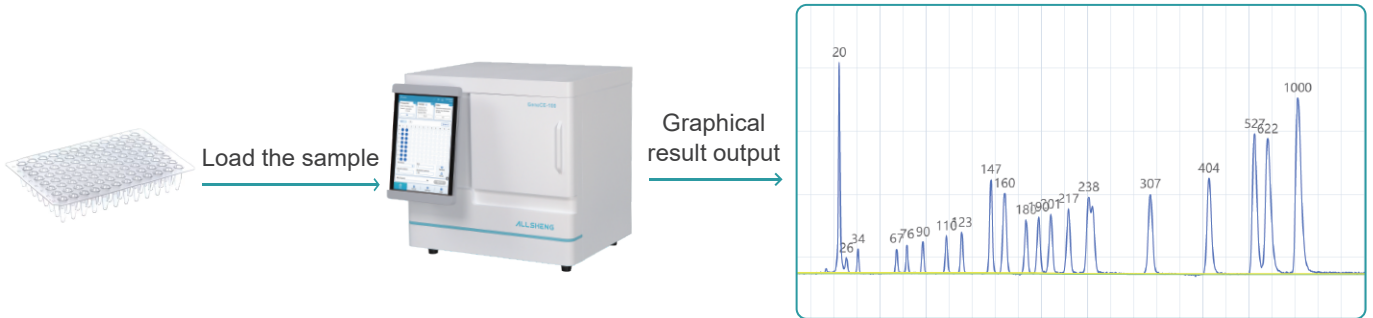
03

High Sensitivity

Detection ranges from the nanogram to the picogram level are available.

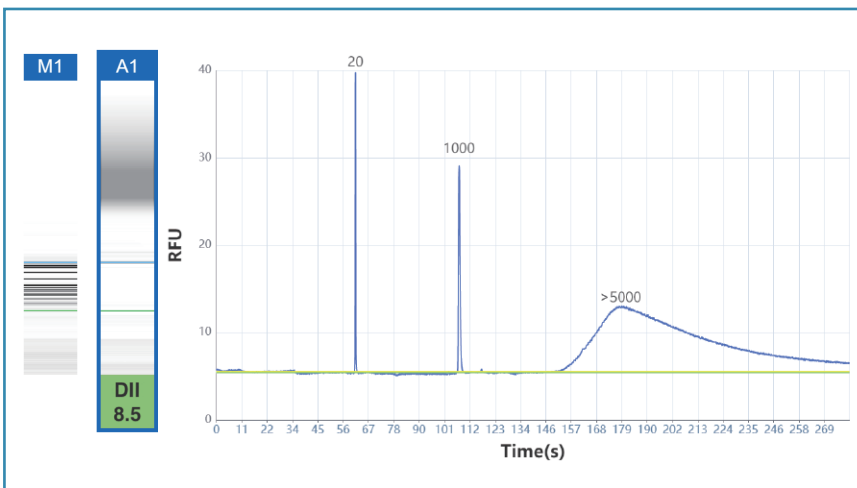


Experimental Process



Software Feature

Powerful independent control software allows for well layout, parameter settings and data analysis through a 10-inch high-resolution touch screen. With an intuitive and simple interface, it is easy to operate and can efficiently complete the progress of sample analysis.



The software interface features several control panels and a well layout grid. At the top, there are three panels: "Process File" (Name: 10312024_11235, Created: 10/31/2024 11:24:08), "Cartridge" (Cartridge Type, Remaining Runs, Expiration Date), and "Buffer" (Separation Number: 40/100, Change Time: 10/10/2024 18:19:38). Below these is a "test 1" section with a "Sample ID" field. The main area is a 12x8 grid of wells (A-H, 1-12). The first two columns (1 and 2) are filled with blue circles, while the rest are empty. At the bottom, there are fields for "Test Method", "Runs" (set to 1), "Sample duration(s)" (set to 10), and "Separation duration(s)" (set to 150). A "Run" button is visible, along with a "Rat of progress" indicator at 0%.

- User authorization management and user independent account and password.
- Select single or superimposed views of Gel and electropherogram views.
- Unique algorithms can directly reflect the characteristics of peak values, including peak number, peak height, peak width and area.

Analysis Cartridge Kit

The analysis cartridge kit is suitable for GeneCE-100 Bio-fragment analyzing system, mainly used for detecting the size and concentration of DNA fragments in gDNA, cfDNA, FFPE blocks, PCR products, broken libraries and other samples, as well as for bacterial / viral screening and identification. Compared to traditional electrophoresis, it has the advantages of high resolution, fast separation speed, low sample consumption, high detection sensitivity, and high degree of automation.



	Standard cartridge kit (SC2)	High-resolution analysis cartridge kit (SH1)	High-sensitivity analysis cartridge kit (NH1)
Separation range	20~5000 bp	20~5000 bp	20~5000 bp
Maximum resolution	5~10 bp	1~4 bp	1~4 bp
Sample size / cartridge	200 times	200 times	100 times
Detection limit	5 pg/μL	5 pg/μL	1 pg/μL
Valid period	6 months	6 months	4 months (3 months after opening)
Application range	NGS library quality control, cfDNA detection, PCR detection	Multiplex PCR detection, SSR analysis	Low concentration DNA sample analysis, such as cfDNA

Specification

Detection method	Fluorescence
System light source	LED
Detector	High-sensitivity PMT
Throughput	1~96
Detection limit	1 pg/μL (optimized condition)
Resolution	1~4 bp
Analysis time	3~5 min/sample
Sample consumption	<0.2 μL

Fragment size CV%	≤2%
Fragment concentration CV%	≤4%
Instrument type	Single channel
Operating system	Windows 11 and higher
Display method	10-inch high-resolution touch screen
Power supply	110~240 V/AC, 50/60 Hz
Weight	26 kg
Dimension	460×445×448 mm

Ordering Information

Code	Product description	Specification
AS-31010-00	Bio-Fragment Analyzing System	
AS-31011-01	High-resolution (DNA) analysis cartridge kit (SH1)	200 times/pc
AS-31011-02	Standard cartridge kit (DNA) (SC2)	200 times/pc
AS-31011-03	High-sensitivity (DNA) analysis cartridge kit (NH1)	100 times/pc
AS-31011-97	8-strip PCR tube+cap	2 pcs
AS-31011-98	0.5 mL tip	2 pcs
AS-31011-99	Reservoir	2 pcs
RS-AM0101	20-1000 bp Alignment Marker (DNA)	100 µL/pc
RS-AM0102	20-5000 bp Alignment Marker (DNA)	100 µL/pc
RS-SM0101	20-1000 bp Size Marker (DNA)	100 µL/pc
RS-SM0102	20-5000 bp Size Marker (DNA)	100 µL/pc
RS-SB01	Separation Buffer (DNA)	60 mL/bottle
RS-DB01	Dilution Buffer (DNA)	15 mL/bottle
RS-MO01	Mineral Oil	15 mL/bottle

HANGZHOU ALLSHENG INSTRUMENTS CO., LTD.

Building 9 No.7 of Zhuantang Science and Technology Economic Zone,
Xihu District, Hangzhou City, 310024 Zhejiang, P.R. China

Tel: +86-571-88859758

Fax: +86-571-87205673

✉ info@allsheng.com

🌐 www.allsheng.com

